

STANDARD DEPARTURE CHART
INSTRUMENT(SID) - ICAO

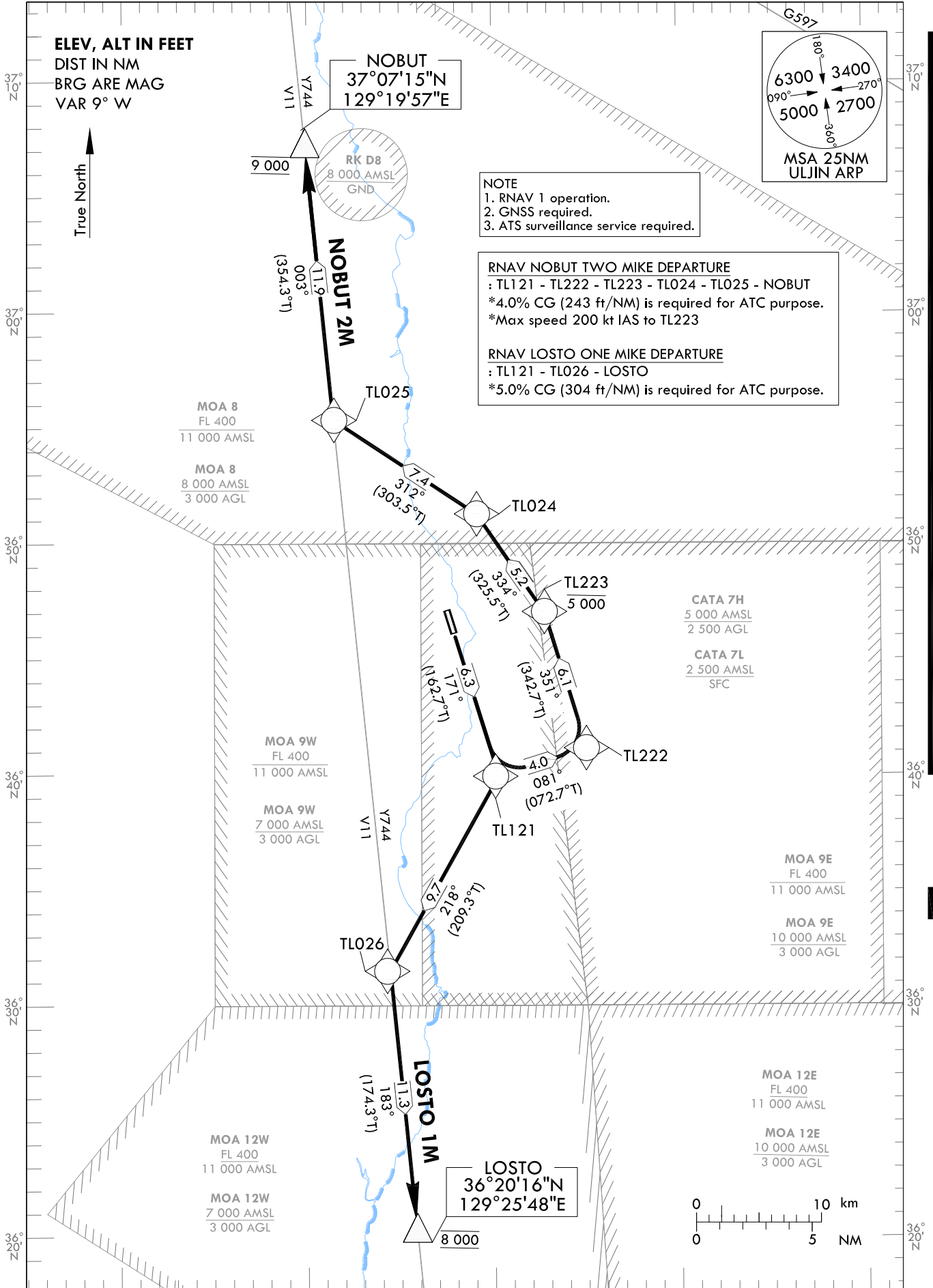
TRANSITION ALT 14 000
TRANSITION LVL FL 140

ULJIN	DEP	120.875
		317.65
ULJIN	TWR	118.55
		317.45

ULJIN/ULjin(RKTL)
RWY 17
RNAV NOBUT 2M
RNAV LOSTO 1M

Note : Departure under ICAO flight Procedures.

129°30'E



NOTE
1. RNAV 1 operation.
2. GNSS required.
3. ATS surveillance service required.

RNAV NOBUT TWO MIKE DEPARTURE
: TL121 - TL222 - TL223 - TL024 - TL025 - NOBUT
*4.0% CG (243 ft/NM) is required for ATC purpose.
*Max speed 200 kt IAS to TL223

RNAV LOSTO ONE MIKE DEPARTURE
: TL121 - TL026 - LOSTO
*5.0% CG (304 ft/NM) is required for ATC purpose.

Change : Information of MAG VAR(8° W → 9° W), MSA and standard instrument departure procedure for RWY 17(NOBT 1M → 2M).

AERONAUTICAL DATA TABULATION

Standard Instrument Departure Procedure Coding Tables

RNAV NOBUT 2M												
Serial Number	Path Descriptor	Waypoint Identifier	Fly-over	Course/Track °M(°T)	Distance (NM)	Turn direction	Altitude (ft)	Speed (kt)	Coordinates	VPA/TCH	Navigation specification	Remarks
001	CF	TL121	-	171(162.7)	6.3	-	-	-200	36°39'57.5"N 129°30'16.9"E	-	RNAV 1	-
002	TF	TL222	-	081(072.7)	4.0	-	-	-200	36°41'08.8"N 129°35'01.8"E	-	RNAV 1	-
003	TF	TL223	-	351(342.7)	6.1	-	-5 000	-200	36°47'01.3"N 129°32'46.0"E	-	RNAV 1	-
004	TF	TL024	-	334(325.5)	5.2	-	-	-	36°51'17.2"N 129°29'07.5"E	-	RNAV 1	-
005	TF	TL025	-	312(303.5)	7.4	-	-	-	36°55'22.2"N 129°21'26.0"E	-	RNAV 1	-
006	TF	NOBUT	-	003(354.3)	11.9	-	@9 000	-	37°07'15.1"N 129°19'56.6"E	-	RNAV 1	-

RNAV LOSTO 1M												
Serial Number	Path Descriptor	Waypoint Identifier	Fly-over	Course/Track °M(°T)	Distance (NM)	Turn direction	Altitude (ft)	Speed (kt)	Coordinates	VPA/TCH	Navigation specification	Remarks
001	CF	TL121	-	171(162.7)	6.3	-	-	-	36°39'57.5"N 129°30'16.9"E	-	RNAV 1	-
002	TF	TL026	-	218(209.3)	9.7	-	-	-	36°31'29.8"N 129°24'24.6"E	-	RNAV 1	-
003	TF	LOSTO	-	183(174.3)	11.3	-	@8 000	-	36°20'15.8"N 129°25'48.3"E	-	RNAV 1	-

Change : Information of standard instrument departure procedure for RWY 17.

STANDARD DEPARTURE CHART
INSTRUMENT(SID) - ICAO

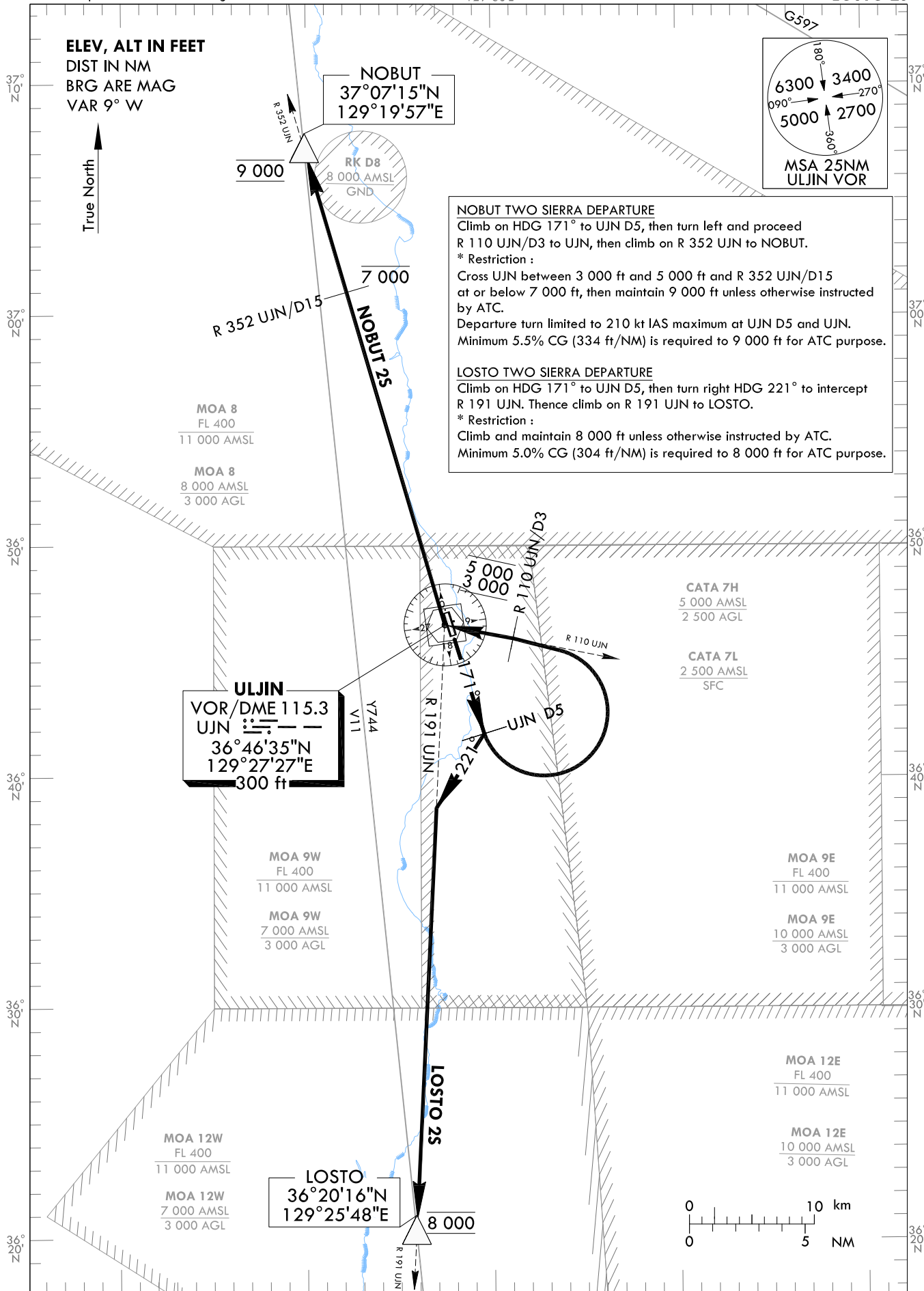
TRANSITION ALT 14 000
TRANSITION LVL FL 140

ULJIN	DEP	120.875
ULJIN	TWR	118.55
		317.45

ULJIN/ULjin(RKTL)
RWY 17
NOBUT 2S
LOSTO 2S

Note : Departure under ICAO flight Procedures.

129°30'E



Change : Information of MAG VAR(8° W → 9° W), MSA, UJN VOR/DME and standard instrument departure procedure for RWY 17.

INTENTIONALLY

LEFT

BLANK

STANDARD DEPARTURE CHART
INSTRUMENT(SID) - ICAO

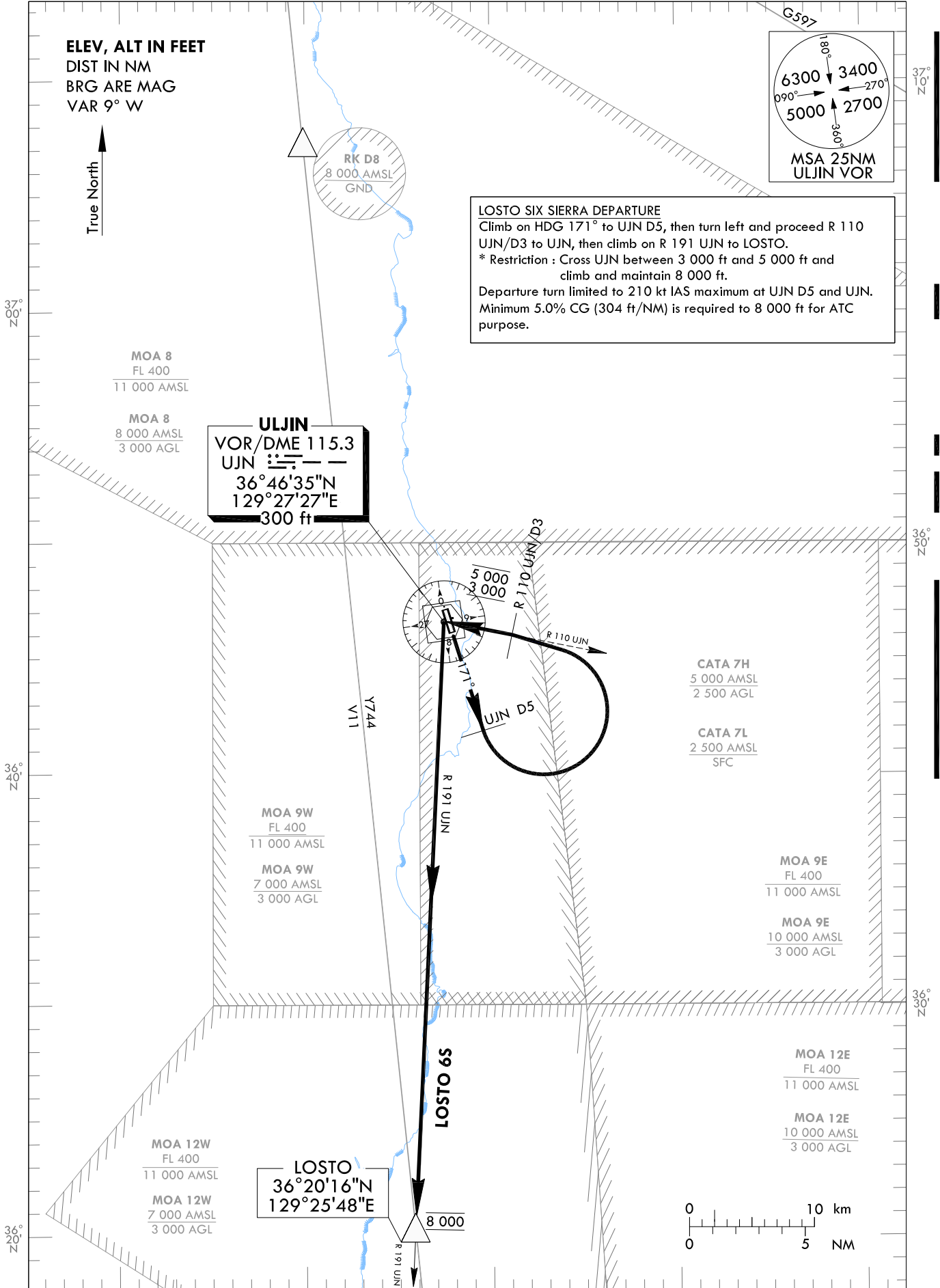
TRANSITION ALT 14 000
TRANSITION LVL FL 140

ULJIN	DEP	120.875
		317.65
ULJIN	TWR	118.55
		317.45

ULJIN/ULjin(RKTL)
RWY 17
LOSTO 6S

Note : Departure under ICAO flight Procedures.

129°30'E



Change : Information of MAG VAR(8° W → 9° W), MSA, UJN VOR/DME and standard instrument departure procedure for RWY 17.

INTENTIONALLY

LEFT

BLANK

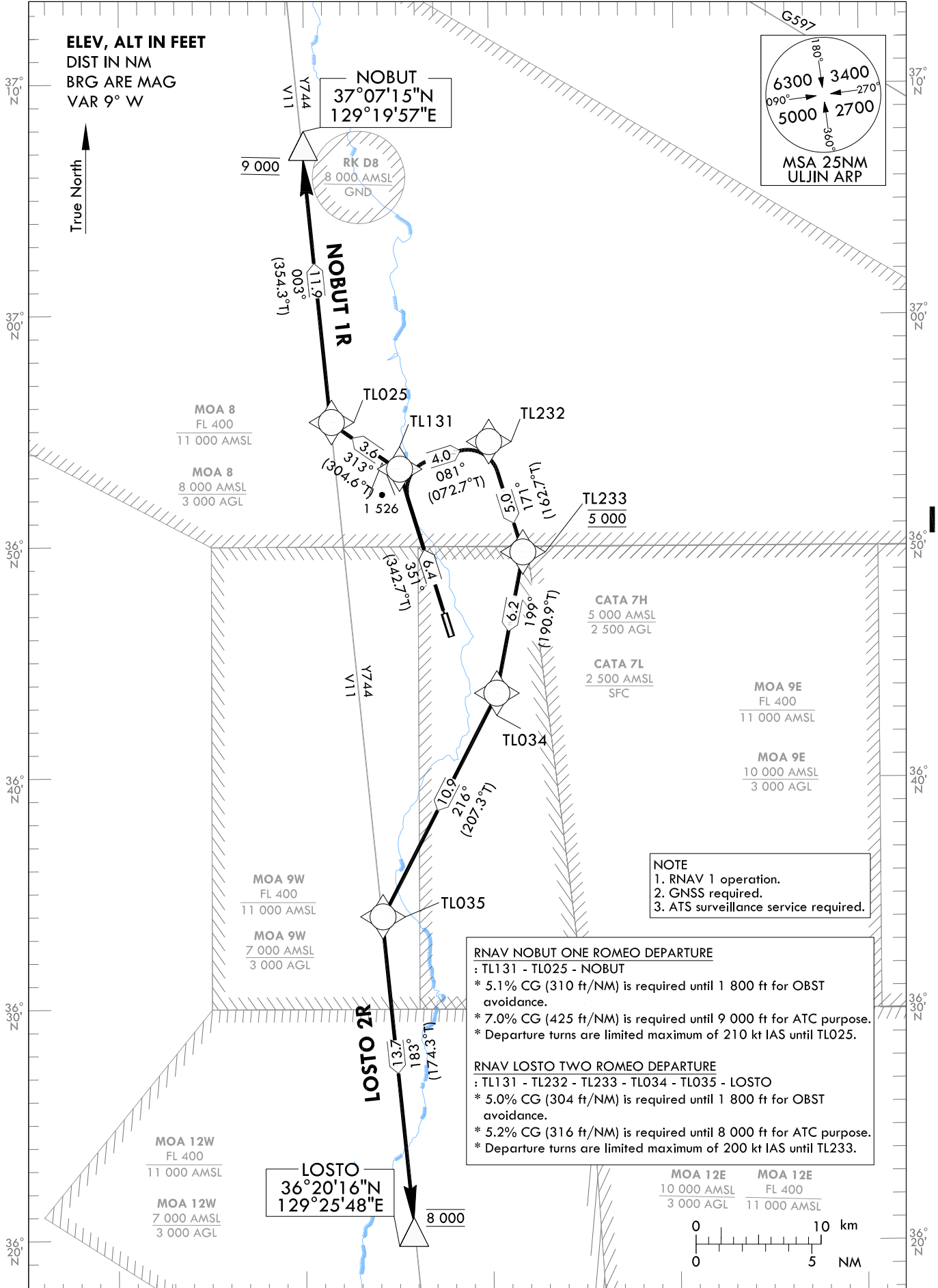
STANDARD DEPARTURE CHART
INSTRUMENT(SID) - ICAO

TRANSITION ALT 14 000
TRANSITION LVL FL 140

ULJIN DEP 120.875
317.65
ULJIN TWR 118.55
317.45

ULJIN/ULjin(RKTL)
RWY 35
RNAV NOBUT 1R
RNAV LOSTO 2R

Note : Departure under ICAO flight Procedures.



Change : Establishment of altitude restriction for TL233.

AERONAUTICAL DATA TABULATION

Standard Instrument Departure Procedure Coding Tables

RNAV NOBUT 1R

Serial Number	Path Descriptor	Waypoint Identifier	Fly-over	Course/Track °M(°T)	Distance (NM)	Turn direction	Altitude (ft)	Speed (kt)	Coordinates	VPA/TCH	Navigation specification	Remarks
001	CF	TL131	-	351(342.7)	6.4	-	-	-210	36°53'20.2"N 129°25'06.2"E	-	RNAV 1	-
002	TF	TL025	-	313(304.6)	3.6	-	-	-210	36°55'22.2"N 129°21'26.0"E	-	RNAV 1	-
003	TF	NOBUT	-	003(354.3)	11.9	-	@9 000	-	37°07'15.1"N 129°19'56.6"E	-	RNAV 1	-

RNAV LOSTO 2R

Serial Number	Path Descriptor	Waypoint Identifier	Fly-over	Course/Track °M(°T)	Distance (NM)	Turn direction	Altitude (ft)	Speed (kt)	Coordinates	VPA/TCH	Navigation specification	Remarks
001	CF	TL131	-	351(342.7)	6.4	-	-	-200	36°53'20.2"N 129°25'06.2"E	-	RNAV 1	-
002	TF	TL232	-	081(072.7)	4.0	-	-	-200	36°54'31.7"N 129°29'51.9"E	-	RNAV 1	-
003	TF	TL233	-	171(162.7)	5.0	-	@5 000	-200	36°49'42.8"N 129°31'43.6"E	-	RNAV 1	-
004	TF	TL034	-	199(190.9)	6.2	-	-	-	36°43'35.6"N 129°30'17.9"E	-	RNAV 1	-
005	TF	TL035	-	216(207.3)	10.9	-	-	-	36°33'54.5"N 129°24'06.6"E	-	RNAV 1	-
006	TF	LOSTO	-	183(174.3)	13.7	-	@8 000	-	36°20'15.8"N 129°25'48.3"E	-	RNAV 1	-

INTENTIONALLY

LEFT

BLANK

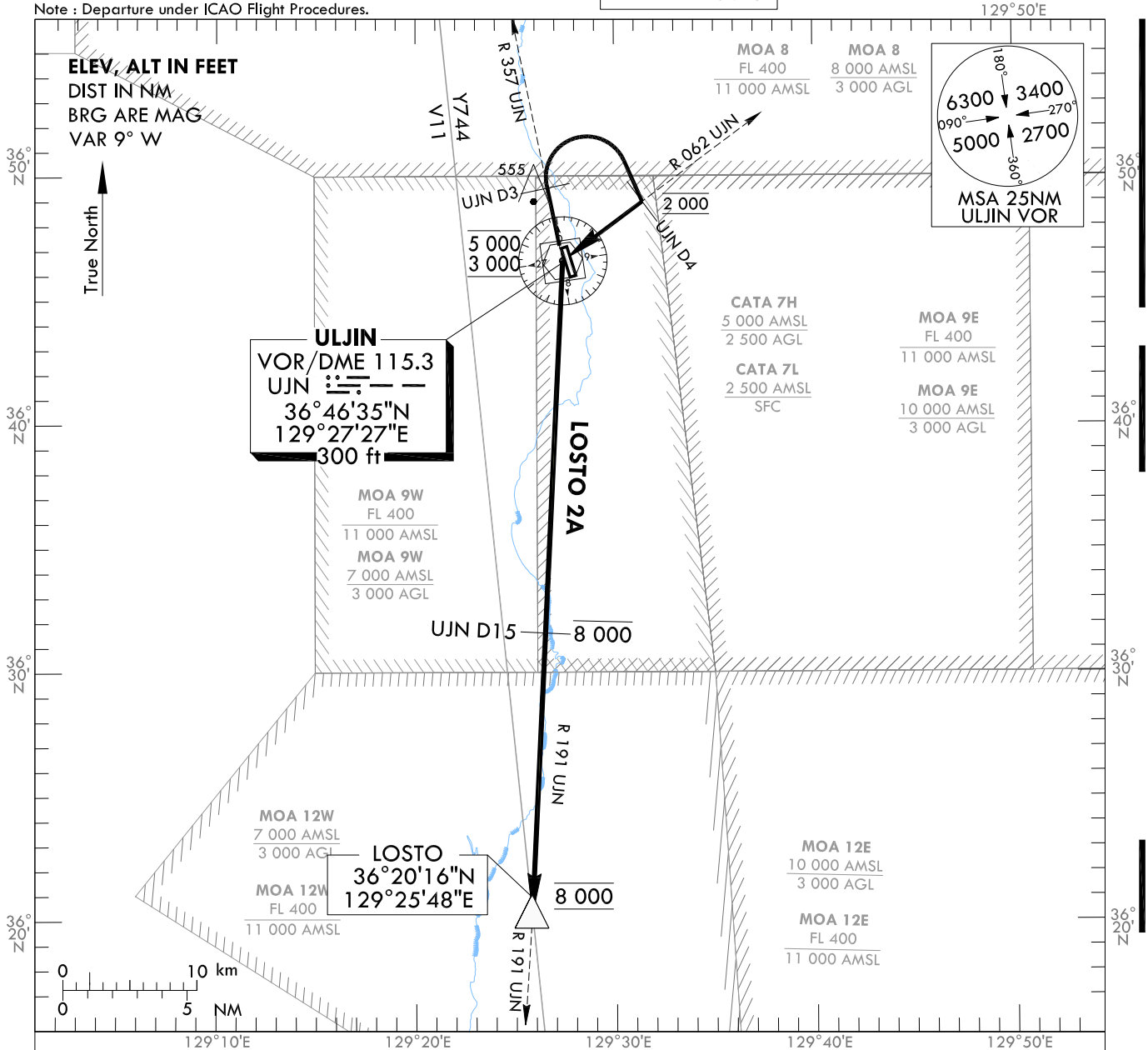
STANDARD DEPARTURE CHART
INSTRUMENT (SID) - ICAO

TRANSITION ALT 14 000
TRANSITION LVL FL 140

ULJIN DEP 120.875
317.65
ULJIN TWR 118.55
317.45

ULJIN/Uijin(RKTL)
RWY 35
LOSTO 2A

Note : Departure under ICAO Flight Procedures.



LOSTO TWO ALPHA DEPARTURE

Climb on R 357 UJN at UJN D3 turn right and proceed on R 062 UJN/D4 to UJN.

Thence climb on R 191 UJN to LOSTO.

- * Cross R 062 UJN/D4 maintain 2 000 ft, UJN between 3 000 ft and 5 000 ft, R 191 UJN/D15 at or below 8 000 ft, maintain 8 000 ft unless otherwise instructed by ATC.
- * Minimum 5.3% CG (322 ft/NM) is required to 900 ft for OBST avoidance.
- * Minimum 5.3% CG (322 ft/NM) is required to 8 000 ft for ATC purpose.
- * LOSTO 2A should be used for CAT A&B.
- * LOSTO 2A only used for MOA 8(at or above 3 000 ft) HOT (BEING USED).

Change : Information of FREQ, MSA, UJN VOR/DME and standard instrument departure procedure for RWY 35(LOSTO 1A → 2A).

INTENTIONALLY

LEFT

BLANK

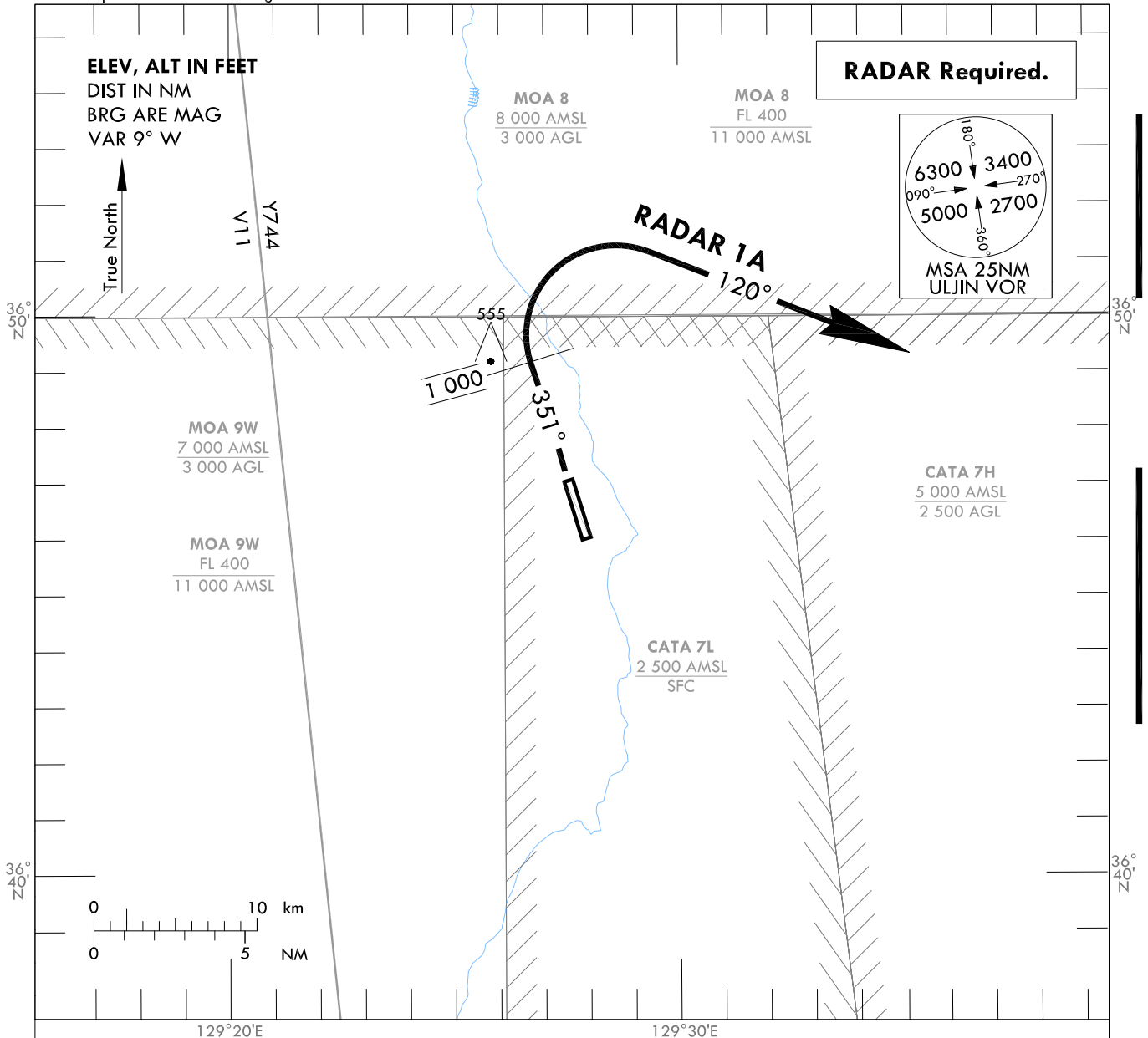
STANDARD DEPARTURE CHART
INSTRUMENT (SID) - ICAO

TRANSITION ALT 14 000
TRANSITION LVL FL 140

ULJIN	DEP	120.875
		317.65
ULJIN	TWR	118.55
		317.45

ULJIN/ULjin(RKTL)
RWY 35
RADAR 1A

Note : Departure under ICAO Flight Procedures.



RADAR ONE ALPHA DEPARTURE

Climb on RWY HDG until reaching 1 000 ft, then turn Right HDG 120° and climb and maintain 2 000 ft for RADAR VECTOR.

- * Minimum 5.2% CG (316 ft/NM) is required to 900 ft for OBST avoidance.
- * Minimum 6.5% CG (395 ft/NM) is required to 2 000 ft for ATC purpose.
- * RADAR 1A should be used for CAT A & B.
- * RADAR 1A only used for VOR/DME U/S or contingency.

Radio communication failure procedure

If no radio contact with ATC, squawk 7600, and unless otherwise instructed by ATC proceed to the last assigned route and altitude.

- * Pilot shall use caution not to penetrate military operation area.

Change : Withdrawal of UJN VORTAC and Information of FREQ, MSA, NOTE.

INTENTIONALLY

LEFT

BLANK